

LUCID

Lucid Mobile Charging Cable Guide

North America

Version 2023.08.3 US English

Table of Contents

<u>Chapters</u>	<u>Sections</u>	
Disclaimers	Legal and Disclaimers	1
Safety Information	Safety Information	2
Overview	Lucid Mobile Charging Cable Overview	3
	Specifications	4
Adaptors and Charging Rates	Adaptors	5
	Connecting the Adaptor	6
Charging	Charging Times	7
	Charging the Vehicle	8
	Mobile Charging Cable Status Lights	9
Installation	Wall Mount Installation	10
	Cable Hook Installation	11
Consumer Information	Warranty	12
	Technical Support	14
	Customer Care	15

Legal and Disclaimers

Legal

Lucid, Lucid Air, Lucid Mobile Charging Cable, and the Lucid Motors wordmarks and logos are trademarks of Lucid Group, Inc.

Specifications are subject to change without notice. Images of the Lucid Mobile Charging Cable are representative; production models may vary.

No portion of these materials may be duplicated, used, or disclosed without prior written permission from Lucid Group, Inc.

Disclaimers

Read this user guide before operating. This user guide includes the latest information available at the time of publishing. Lucid Group, Inc. reserves the right to make changes to this user guide and/or product without notice. Changes or modifications to this product not completed by an authorized service provider could void the product warranty.

Safety Information

This guide contains instructions and warnings that must be followed when installing and using the Electric Vehicle Supply Equipment (EVSE), and should not be used for any other product. Before installing or using the EVSE, read this entire guide including the WARNING and CAUTION markings.

The information in this guide does not exempt the user from following all applicable codes or safety standards.

Compliance for Class B Digital Device

This equipment has been tested and found to comply with the limits for a Class B digital device, pursuant to part 15 of the FCC Rules. These limits are designed to provide reasonable protection against harmful interference in a residential installation.

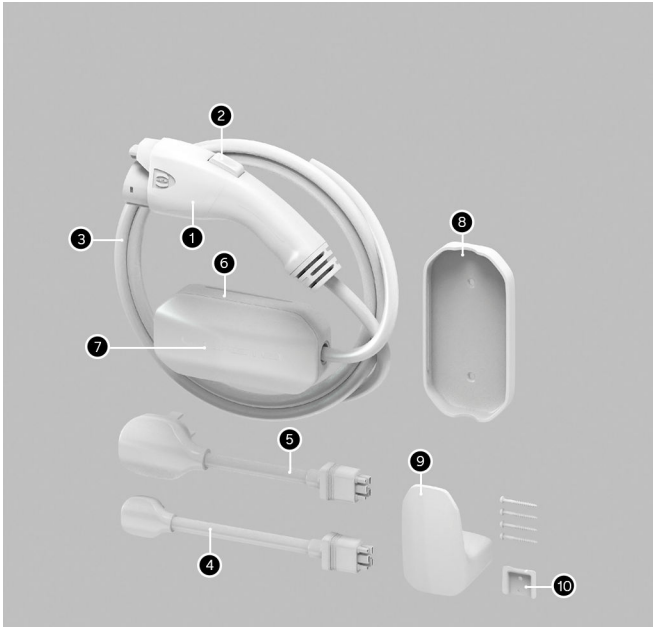
This equipment generates, uses, and can radiate radio frequency energy and, if not installed and used in accordance with the instructions, may cause harmful interference to radio communications. However, there is no guarantee that interference will not occur in a particular installation. If this equipment does cause harmful interference to radio or television reception, which can be determined by turning the equipment off and on, the user is encouraged to try to correct the interference by one or more of the following measures:

- Reorient or relocate the receiving antenna.
- Increase the separation between the equipment and receiver.
- Connect the equipment into an outlet on a circuit different from that to which the receiver is connected.
- Consult the dealer or an experienced radio/TV technician for help.

Lucid Mobile Charging Cable Overview

Package Contents:

1. Charging Connector (Plugs into Vehicle)
2. Connector Latch Button
3. Connector Cable (Fixed to Control Unit)
4. NEMA 5-15 Adaptor (Removable, Plugs into Wall Outlet)
5. NEMA 14-50 Adaptor (Removable, Plugs into Wall Outlet)
6. Mobile Charging Control Unit
7. Status LED Lights
8. Wall Mount Bracket (If Equipped)
9. Cable Hook (If Equipped)
10. Mounting Hardware (If Equipped)



Specifications

Overview

Use only a 120-volt, 208-volt, or 240-volt AC supply, 50/60 hertz wall outlet that has a dedicated and properly grounded circuit, and is rated for at least 15 amperes.

Whenever possible, use a dedicated receptacle with a single socket. If the receptacle has two sockets, do not plug any other items into the other socket.

The Mobile Charging Cable is 20 feet (6 meters) long. Use an existing outlet or install a new outlet within approximately 13 feet (4 meters) of the vehicle's charge port and at least 18 inches (45 centimeters) above the ground. The charge port door is located to the rear of the driver side front wheel.

 **DANGER: RISK OF FIRE OR EXPLOSION**

 **WARNING: RISK OF ELECTRIC SHOCK**

Do not use extension cables, a multi-outlet adaptor, a multi-plug, a conversion plug, or a power strip. Using these items can cause damage to the equipment and increase the risk of electric shock or fire.

 **WARNING: RISK OF ELECTRIC SHOCK**

Use the Lucid Mobile Charging Cable only for electric vehicles. Using the Lucid Mobile Charging Cable for anything other than electric vehicles can damage the equipment and increase the risk of electric shock.

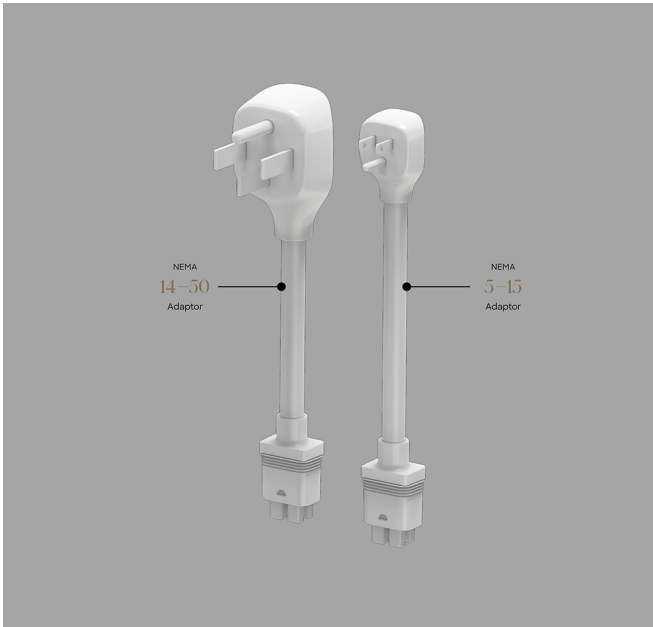
Specifications Reference

Voltage	Maximum Current
100-240V AC single-phase	40A max, controlled by adaptor
Grid Frequency	
50 Hz / 60 Hz	
Mobile Charging Cable Control Box Dimensions and Weight	
Height	7.1 in / 180 mm
Width	3.5 in / 90 mm
Depth	2.0 in / 50 mm
Weight	8.2 lbs / 3.7 Kg
Operating Temperature	Enclosure Rating
-50° C to +50° C	4x (Waterproof)
Ventilation	
Not Required	

Adaptors

The Lucid Mobile Charging Cable includes two outlet adaptors: one for a standard 120-volt household outlet and a second adaptor for a 240-volt outlet . Additional adaptors may be available for purchase from Lucid. For faster charging, use a 240-volt outlet.

Note: Lucid has partnered with Qmerit to provide customers a seamless installation experience in sourcing local electricians to support installation of outlets that our Lucid Mobile Charging Cable can utilize. To identify local electricians via our installation partner, Qmerit, visit <https://qmerit.com/ev/lucidmotors/>.



Use the following tables to calculate charging rates for a given adaptor.

Adaptor Type	Current	Power at 120 Volts
NEMA 5-15	12A	1.4 kW
Adaptor Type	Current	Power at 240 Volts
NEMA 14-50	40A	9.6 kW
NEMA 14-50	24A	5.7 kW

Connecting the Adaptor

⚠ DANGER: RISK OF FIRE OR EXPLOSION

⚠ WARNING: RISK OF ELECTRIC SHOCK

Do not use if the equipment is damaged. Always inspect all parts of the equipment before installing or using. Installing or using damaged equipment can increase risk of electrical shock or fire.

⚠ CAUTION: RISK OF PERSONAL INJURY

⚠ CAUTION: RISK OF DAMAGE TO THE EQUIPMENT

⚠ DANGER: RISK OF FIRE OR EXPLOSION

⚠ WARNING: RISK OF ELECTRIC SHOCK

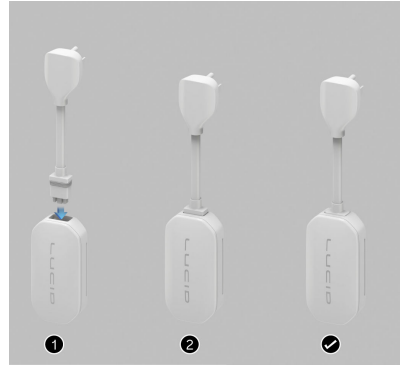
Do not use extension cables, a multi-outlet adaptor, a multi-plug, a conversion plug, or a power strip. Using these items can cause damage to the equipment and increase the risk of electric shock or fire.

⚠ WARNING: RISK OF ELECTRIC SHOCK

Connect only to properly grounded outlets. Improper connection can cause electric shock and damage to the electrical outlet and equipment. Check with a licensed electrician or serviceman if there is doubt that the product is properly grounded.

Attaching

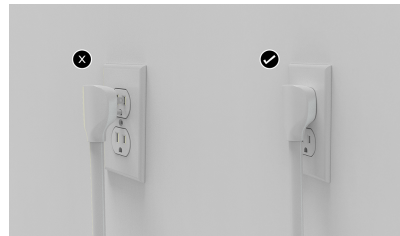
To attach an adaptor, line up the adaptor plug with the control box of the Mobile Charging Cable and push it into the socket until flush with the control box and snugly fit.



Removing

To remove the adaptor, firmly grasp the adaptor and pull it from its socket.

Note: The Mobile Charging Cable automatically detects the attached adaptor and sets the appropriate charging amperage. Ensure that the plug is fully inserted into the outlet.



Charging Times

Charging times vary based on the voltage and current available from the power outlet, subject to various conditions. Charge time also depends on ambient temperature and the vehicle's battery temperature. If the battery is not within the optimal temperature range for charging, the vehicle heats or cools the battery before or during charging.

To estimate the time needed to recharge the battery in hours (from near zero percent to near one hundred percent), divide the battery size (kWh) by power (kW). Different adaptors provide different current and power outputs.

While charging your vehicle, you can touch the Charging icon on the Infotainment screen or the Lucid App to review the charging status information, including the time remaining until fully charged at the currently selected charge level.

Note: An electricity relationship principle known as Ohm's Law states that a 240-volt circuit charging at 40 amperes provides 9,600 watts of power: $40 \times 240 = 9,600$. When expressed as kilowatts, this works out to 9.6 kW. The actual charging power can vary based on vehicle conditions such as wake-up/sleep, energy conversion efficiency, and AC/Heater ON/OFF. Thus, it would take between 9-10 hours to charge a 90 kWh battery pack from 0% capacity to 100% capacity. (90 divided by 9.6 is roughly 9.3 hours.) Further note that, in order to avoid possible battery damage, Lucid recommends that you never fully discharge the vehicle battery.


Charging the Vehicle

 **DANGER: RISK OF FIRE OR EXPLOSION**

 **WARNING: RISK OF ELECTRIC SHOCK**

Do not use if the equipment is damaged. Always inspect all parts of the equipment before installing or using. Installing or using damaged equipment can increase risk of electrical shock or fire.

 **CAUTION: RISK OF PERSONAL INJURY**

 **CAUTION: RISK OF DAMAGE TO THE EQUIPMENT**

Always store the equipment properly and only use the equipment within the scope of service conditions. Misuse such as dropping, immersion, etc., may cause damage and could result in injury or death to anyone nearby.

Plugging In

Follow these steps to ensure proper charging of your Lucid vehicle.

 **DANGER: RISK OF FIRE OR EXPLOSION**

 **WARNING: RISK OF ELECTRIC SHOCK**

Do not use extension cables, a multi-outlet adaptor, a multi-plug, a conversion plug, or a power strip. Using these items can cause damage to the equipment and increase the risk of electric shock or fire.

 **WARNING: RISK OF ELECTRIC SHOCK**

Connect only to properly grounded outlets. Improper connection can cause electric shock and damage to the electrical outlet and equipment. Check with a licensed electrician or serviceman if there is doubt that the product is properly grounded.

1. Ensure that the adaptor plugged into the Mobile Charging Cable matches the outlet you want to use.
2. Plug the Mobile Charging Cable plug head into the power outlet. The adaptor should be inserted completely into the

power outlet. The Lucid logo on the control box should light up with a white light to indicate the unit is powered and ready. Wait 3 seconds to confirm the logo does not begin flashing red. If it remains white, proceed to step 3.

3. With your vehicle unlocked, press the charge port door to open it.
4. Press the Connector latch button, and plug the Mobile Charging Cable Connector into your vehicle's charge port.
5. When you plug the Mobile Charging Cable into your vehicle, the Lucid logo on the control box and the charge port light will pulse white to indicate charging.

Unplugging

When charging is complete, the light stops pulsing and turns solid white. You can then safely unplug the vehicle using these steps.

1. With the vehicle unlocked, press the Connector Latch Button and then pull the Connector out of the charge port.
2. Lucid recommends leaving the Mobile Charging Cable plugged into the wall outlet to reduce wear and tear from daily use. If you do not plan to use the Mobile Charging Cable for extended periods of time (for example, going away on vacation), unplug it, and store it in an appropriate location.

Mobile Charging Cable Status Lights

The Mobile Charging Cable Control Box includes lights that indicate device status. Refer to the following table to understand device status.

 **WARNING: RISK OF ELECTRIC SHOCK**

Do not service and/or open the equipment. Opening the equipment can cause electrical shock.

Light Color	Light Animation	What it Means	Troubleshooting Steps
No Light	—	Power off	Check power supply
White	Constant	Ready to charge/ communicating	—
White	Flashing	Charging in progress	—
Red	One flash	GFCI fault	Unplug and then plug the charging cable into a power outlet. Try a different outlet.
Red	Two flashes	Relay error	Unplug and then plug the charging cable into a power outlet.
Red	Three flashes	Loss of ground	Check if correct plug is used and if plugs are fully inserted. Try a different outlet.
Red	Four flashes	Overtemperature detected in plug	Check if plugs are fully inserted. Try charging in a cooler area.
Red	Five flashes	Overtemperature detected in EVSE relay	Unplug and then plug the charging cable into a power outlet.
Red	Six flashes	Pilot signal error	Unplug and then plug into power outlet. Ensure vehicle software is up-to- date.
Red	Seven flashes	Undervoltage error	Unplug and then plug the charging cable into a power outlet. Try a different outlet.
Red	Eight flashes	Overvoltage error	Unplug and then plug the charging cable into a power outlet. Try a different outlet.
	Nine flashes	Internal error	Unplug and then plug the charging cable into a power outlet. Try a different outlet.

Wall Mount Installation

Note: The Mobile Charging Cable does not require ventilation.

Note: If not equipped, the Mobile Charging Cable Wall Mount accessory and hardware may be available for purchase in your region.

The Mobile Charging Cable Wall Mount is designed to hold the control box in place on the wall.

1. Select a location with an electrical socket in a covered area protected against direct sunlight and rain (for example, in a garage). Place the Wall Mount at the adaptor's cable length from the wall outlet. Measure using the included adaptors before marking pilot holes.
2. Drill the pilot holes. Ensure the pilot holes being drilled are clear of conduits or other electrical wiring within the selected wall.
3. Using two of the included screws, fasten the bracket to the wall.
4. After plugging the adaptor head in, snap the control box into the bracket.



Cable Hook Installation

The Mobile Charging Cable Organizer is designed to organize the connector-side cable of the unit.

1. Take the metal hardware bracket and position it along a wall within proximity of the electrical socket and wall mount.
2. Mark the pilot holes on the wall.
3. Drill the mounting holes. Using two (2x) of the included drywall screws, fasten the bracket to the wall.
4. Position the organizer directly above the bracket along the wall, and slide the organizer downwards onto the bracket.



Warranty

Who is the Warrantor?

Lucid USA, Inc. is the warrantor in the United States and Lucid Motors Canada ULC is the warrantor in Canada (collectively "Lucid").

Who May Use this Limited Warranty?

This Limited Warranty is provided to the original and subsequent owner(s) of the Lucid Mobile Charging Cable. This Limited Warranty can be transferred from the original owner to a subsequent owner. To obtain coverage, the new owner must provide proof of ownership transfer.

What Does this Limited Warranty Cover?

This Limited Warranty applies only to the Lucid Mobile Charging Cable. It covers the repair, or replacement of parts necessary to correct defects in the materials or workmanship of any parts manufactured or supplied by Lucid under normal use.

This Limited Warranty gives you specific legal rights. You may have other rights that vary from jurisdiction to jurisdiction.

What Does this Limited Warranty not Cover?

Damage caused by any of the following items or actions listed below is not covered under this Limited Warranty:

- Normal wear and tear. Wear and tear describes the normal process by which the components reach the limit of serviceability through normal use.
- Accidents, collision, or objects striking the Lucid Mobile Charging Cable or its components.
- Theft, vandalism, or riot.
- Damage due to external incidents.
- Customer-applied chemicals or accidental spills.
- Damage to appearance of the Lucid Mobile Charging Cable or its components such as chips, dents, cracks, and scratches.
- Abuse and/or misuse of the Lucid Mobile Charging Cable or its components.
- Any unauthorized access or modification to the Lucid Mobile Charging Cable or its components.
- The use of incompatible charging devices or methods.
- Repairs or installation performed by personnel not authorized by Lucid, including repairs that would have otherwise been covered under the Lucid Mobile Charging warranty.
- Use for commercial purposes.

What is the Coverage Period?

Two years from the original date of purchase of the Lucid Mobile Charging Cable or the remainder of your New Vehicle Limited Warranty's 4 years / 50,000 coverage period, whichever is greater.

What Will Cause this Limited Warranty to Be Voided?

The Lucid Mobile Charging Cable Limited Warranty will be voided and no warranty coverage will be provided in the event of failure to properly operate your Lucid Mobile Charging Cable in accordance with the specific instructions and recommendation regarding the use and operation as provided in this guide.

What Are your Remedies?

This Limited Warranty, and any implied warranty, is limited to repair, replacement, or adjustment of defective parts. This exclusive remedy shall not be deemed to have failed of its essential purpose so long as Lucid, through its authorized service centers, is willing and able to repair, replace, or adjust defective parts as described in this Limited Warranty.

Limitations on Liability

To the fullest extent allowed by applicable law, all of the warranties in this Limited Warranty are subject to the following limitations and disclaimers:

Lucid's liability, if any, shall in no event exceed the cost of correcting manufacturing defects as provided in this Limited Warranty. Upon expiration of this Limited Warranty, any such liability shall terminate.

THE WARRANTIES IN THIS LUCID MOBILE CHARGING CABLE LIMITED WARRANTY ARE THE ONLY EXPRESS WARRANTIES APPLICABLE TO YOUR LUCID MOBILE CHARGING CABLE . LUCID DOES NOT ASSUME OR AUTHORIZE ANYONE TO ASSUME FOR IT ANY OTHER OBLIGATION OR LIABILITY IN CONNECTION WITH YOUR LUCID MOBILE CHARGING CABLE OR THESE WARRANTIES. NO PERSON MAY MODIFY OR WAIVE ANY PART OF THESE WARRANTIES.

As a condition of these warranties, you are responsible for properly using, maintaining, and caring for your Lucid Mobile Charging Cable as outlined in your guide. Lucid recommends that you maintain copies of all maintenance records and receipts for review by Lucid.

Any implied warranty of merchantability or fitness is limited, to the fullest extent allowed by applicable law, to the time period covered by these written warranties, or to the applicable time period provided by applicable law, whichever period is shorter.

To the fullest extent allowed by applicable law, Lucid disclaims all implied warranties if the Lucid Mobile Charging Cable is used for business or commercial purposes.

To the fullest extent allowed by applicable law, Lucid disclaims any and all indirect, incidental, special, and consequential damages, including, but not limited to, loss of time, loss of income, loss of use, damage to or loss of personal or commercial property, inconvenience or aggravation, emotional distress, commercial loss (including lost profits or earnings), transportation expenses, lodging expenses, and incidental charges like phone, fax, or postal expenses, even if Lucid is advised of the possibility that such damages are reasonably foreseeable.

The warranties contained in this Limited Warranty and all questions regarding their enforceability and interpretation are governed by the law of the jurisdiction in which you purchased your Lucid Mobile Charging. Some jurisdictions do not allow Lucid to limit how long an implied warranty lasts or to exclude or limit incidental or consequential damages, so the limitation and exclusions described above may not apply to you.

Technical Support

Installation

For home charging installation inquiries:

<https://qmerit.com/ev/lucidmotors/>

Contact Information

Questions or feedback about the Lucid Mobile
Charging Cable? 24/7 Customer Care:

1-888-99-LUCID (1-888-995-8243) – or –

customercare@lucidmotors.com

Customer Care

Lucid Motors

7373 Gateway Blvd

Newark, CA 94560

USA

Phone: 1-888-99-LUCID (1-888-995-8243)

E-mail: customercare@lucidmotors.com

Website: www.lucidmotors.com